



IMPACT
REPORT
2021

LEADING THE GRACE PLACE WAY

WHAT IS THE GRACE PLACE WAY? We've been examining that question a lot this year. What started as a hashtag on social media has become a mantra – four small words that make a huge difference.

When a global pandemic shut down classrooms across the world, our steadfast community of donors, volunteers, partners, and teaching and administrative staff never wavered. We worked with Collier County Public Schools to ensure each of our families' homes had access to the internet and technology. By July 2020, over 220 students were participating in virtual, in-person, or hybrid summer programs. Our food pantry never closed, serving as many as 475 families a week. Community is The Grace Place Way.

As the 2020–21 school year began, many of our students were not achieving at grade level. A robust network of support helped reinforce our commitment to our mission. It provided us the means to enroll 698 students in the academic year. Our administrative and teaching staff worked around the clock to help students and families in need of academic and social-emotional support. Ninety-two percent of our four-year-old preschoolers met or exceeded all Kindergarten Readiness indicators at the end of the school year. Resilience is The Grace Place Way.

For the eighth consecutive year, 100 percent of our high school LEAD seniors successfully graduated. In addition to our two Jubilee Scholarships, we announced the Opportunity Scholarship – another full ride to Florida Gulf Coast University. Because of your support, there are now three life-changing scholarships available each year. Generosity is The Grace Place Way.

Success was not limited to the classroom. Our administrative staff streamlined budgeting processes and integrated additional assessments and tracking to improve reporting transparency. We want our investors to know how their support is being utilized and to understand their impact more fully. Fiscal responsibility is The Grace Place Way.

Together, we embody The Grace Place Way. Our shared values and your generosity continue to fortify who we are and what we do. As you turn the pages, please join us in the celebration of the success we achieved together.



Lära Fisher
Lära Fisher
Chief Executive
Officer



James W. Bosscher
James Bosscher
Chairman of the
Board of Directors



2020-2021 BOARD OF DIRECTORS

JAMES BOSSCHER, Board Chair

MICHAEL MCGRATH, Board Vice Chair

BRIAN MILLER, Board Treasurer

CRAIG GOODRICH, Board Secretary

MARIO VALLE, Immediate Past Board Chair

JOSEPH BARNETTE, JR., Director

DEBORAH MATHEWS FINCH, Director

RICHARD GROWS, Director

PATRICIA JILK, Director

MOIRA LARDAKIS, Director

CATHY MORTON, Director

CESAR TAVERAS, Director

OUR MISSION

Grace Place puts faith into action, providing pathways out of poverty by educating children and families.

OUR VISION

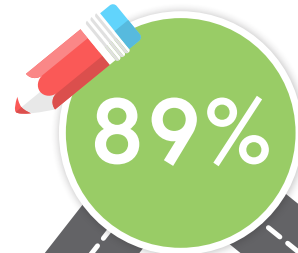
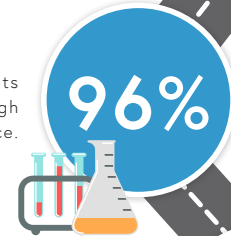
That all families in Golden Gate have access to education to break the cycle of poverty.

THE GRACE PLACE PATHWAY



**EARLY
LEARNING**

of elementary students improved or maintained high performance in science.



of elementary students improved or maintained high performance in English language arts.

of high school students reported getting homework done on time because of the **LEAD** college and career access program.



GRADUATION

of high school students agree the **LEAD** program helped them understand how to make career choices.

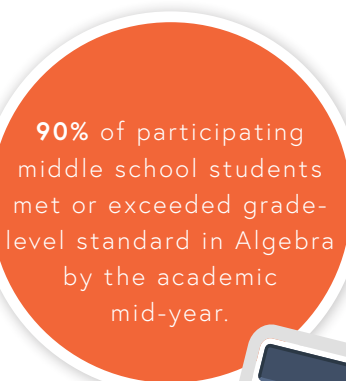


Jubilee Scholarship recipient (2014) completed her Masters at John Hopkins School of Advanced International Studies in Italy.



**ALGEBRA
READINESS BY
NINTH GRADE**

Students who attended our LEAD high school program for three years or more have a **3.0 GPA** or higher.



**GRADE LEVEL
READING BY
THIRD GRADE**



of middle school students reported the program has helped them with their academic performance.



of parents with children enrolled in **ACADEMY OF LEADERS** after school program reported improved parenting skills from adult events.



**KINDERGARTEN
READINESS**



of fulltime two- and three-year old students met or exceeded developmental milestones in social emotional, physical, language, cognitive, literacy, and mathematics.



of fulltime four-year-olds tested kindergarten ready.

OVER 1.7 MILLION POUNDS OF FOOD DISTRIBUTED THROUGH THE GRACE PLACE FOOD PANTRY

PARENT PROGRAM PARTICIPANTS SHOWED AN AVERAGE IMPROVEMENT OF 1.0 GRADE LEVEL IN READING.*

100% OF PARENT PARTICIPANTS DEMONSTRATED IMPROVEMENT IN THEIR ENGLISH LISTENING COMPREHENSION.*

7 ADULT STUDENTS RECEIVED CITIZENSHIP

THE PATH TO FAMILY LITERACY STARTS AT HOME.

Our Bright Beginnings model fosters the development of early language skills in preschoolers while parents attend classes to enhance their abilities as their child's first teacher. Kindergarten readiness is the goal – and it's truly a family effort.

The Academy of Leaders afterschool programs for grades K-8 focus on academic achievement, health and wellness, and career exploration. The high school LEAD (Leaders Empowered to Achieve Dreams) program supports academic achievement, career exploration, and college preparation. Parent programs and adult education classes reinforce family literacy and the value of education.

Families are at the heart of Grace Place. And for many, Grace Place becomes a second family and a home away from home.

THE GRACE PLACE WAY IS...

IFAMILY

"My family and I have been coming to Grace Place for 16 years. I learned to speak English here. My children have grown up here. My son is going to college on a full scholarship because of Grace Place. Not only have they helped my family, but the people here have become family."

ILSE CRUZ, alumna & volunteer
member of the Grace Place family since 2005



EDUARDO CRUZ,
Alumnus and 2021 Jubilee
Scholarship Recipient

JOSE CRUZ,
Volunteer

GABBY CRUZ,
LEAD High
School Student

JENNIFER CRUZ,
Academy of Leaders
Middle School Student

ILSE CRUZ,
Bright Beginnings and Adult
Education Alumna and Volunteer



I HOPE

"The Grace Place Way to me means hope. Believing that by helping all of the families in the Golden Gate area we are helping them to create a better future for themselves and the generations to come. They believe in us to be able to help them and we believe in them that they can be the change that they need to succeed in life."

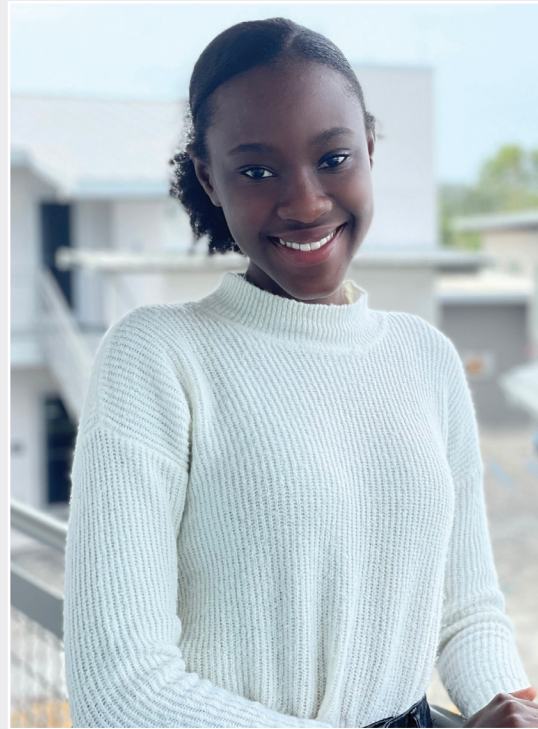
SHAGA FRANCOIS, teacher
member of the Grace Place family since 2016

SUPPORT I

"Grace Place supported me through high school and helped me get a full scholarship to Florida Gulf Coast University. My studies there led to opportunities like climbing Machu Picchu and performing research in the Amazon - things I might have only ever dreamt of. Now, I am working at Grace Place while I attend grad school. It feels good to be part of the organization that gave so much to me and to now be supporting younger students."

ALEX AMADOR, alumnus & staff
member of the Grace Place family since 2012





TRANSFORMATION

"When I think of Grace Place the first thing that I think of are transformational opportunities. Growing up in a low-income area, there are not that many high-quality educational resources compared to my counterparts. Lucky for me, I have access to one right in my backyard. Grace Place is not only a crown-jewel in my community, but it has also brought new ways for young children, students, and even adults to grow and expand their knowledge. I have been with Grace Place since the 4th grade and have seen lives be truly transformed. It has not only been a very valuable resource for me, but has brought so many opportunities into my life that have set me apart from other students my age. Grace Place has been my secret weapon in growing my career and I could not have imagined being in the place I am now if it was not for them."

Prisca Paul, LEAD high school student & intern
member of the Grace Place family since 2014



FRIENDSHIP

"The Grace Place Way is friendship. Friends are very important because you need people who are kind to you, who make you happy, and make you laugh in bad times."

DEYSI AND SOPHIA, Academy of Leaders elementary students
members of the Grace Place family since 2017



FUN

"Grace Place makes learning fun, sometimes I don't even know I'm doing it. I have so much fun here, and my mom is happy that I'm doing so good in school."

STANJIO STACOO, Academy of Leaders elementary student
member of the Grace Place family since 2018



DREAMS

"Grace Place is preparing me for my future, helping me learn about all the opportunities out there for me if I work hard. It makes me dream of what is possible."

ROODNELSA LEMORIN, Academy of Leaders middle school student
member of the Grace Place family since 2016



CONNECTION

"Grace Place has helped us connect and make a strong bond with our kids and our family, but has also created connections with strangers that have become friends, and now family. My children call my Bright Beginnings classmates "tía". I look forward to raising our children together."

USBEIDY GUTIERREZ, Bright Beginnings student & volunteer
member of the Grace Place family since 2017



| ACCEPTANCE

"Grace Place accepts, supports, and values all aspects of every child in the program. Children are encouraged to be independent and curious while at the same time learning to respect others and follow rules."

KAREN BACH, volunteer
member of the Grace Place family since 2019

| EFFECTIVE

"Grace Place establishes a clear path out of poverty through education for Golden Gate children and adults to succeed in today's world."

BILL SAFRIN, volunteer
member of the Grace Place family since 2018



| PARTNERSHIP

"When thinking about The Grace Place Way, the word that comes to mind for me is partnership. During the last 5+ years that I have supported Grace Place, I have witnessed how the students, their families, the staff, the board, and all of our wonderful volunteers have developed amazing partnerships that have had long-lasting repercussions in the Golden Gate community and beyond. We all work together in doing our part to break the cycle of poverty while empowering the kids and families to reach for their goals. Thanks to these symbiotic partnerships, we all walk away with our hearts filled with joy and gratitude knowing that lives are being positively changed for generations to come while remembering that there is still work to be done."

CESAR TAVERAS, board member & donor
member of the Grace Place family since 2015

OPPORTUNITY |

"Over the last ten years, I have seen the mission change lives. They have provided a pathway for language, literacy, and life skills that have given families the ability to go to school, college and apply for jobs they wouldn't have gotten without their education at Grace Place. The opportunities are endless. I'm proud to be a part of Grace Place."

NITA RAPP, donor & volunteer
member of the grace place family since 2011



LEADERSHIP

"Grace Place has led me to find my role in my life. When I first entered Grace Place, I had low grades and was still getting used to being in high school. This organization has led me and so many families into excellence by giving us the opportunity for a better education. The program leaders at LEAD are always encouraging us to focus on our studies and they remind us we are the leaders of tomorrow. I am now part of the JROTC program here at Golden Gate High School and I feel like a leader to the rest of my peers."

WOOD BIEN-AIME, LEAD high school student member of the Grace Place family since 2018

STAY CONNECTED ONLINE TO READ MORE GRACE PLACE WAY PERSPECTIVES.

FINANCIALS

AUGUST 1, 2020 - JULY 31, 2021

UNAUDITED FINANCIALS

ASSETS

CURRENT ASSETS

Operating Funds	528,140
Operating Investment Funds	2,146,663
Accounts Receivable	550,640
Grants Receivable	671,232
Endowment	377,884

CASH & CASH EQUIVALENTS

Other Current Assets	59,422
----------------------	--------

TOTAL CURRENT ASSETS

4,333,981

FIXED ASSETS

Fixed Assets	14,297,436
Accumulated Depreciation	(2,297,325)
Total Net Fixed Assets	12,000,111

TOTAL ASSETS

16,334,092

LIABILITIES AND FUND BALANCE

TOTAL LIABILITIES

1,484,846

TOTAL FUND BALANCE

14,849,246

TOTAL LIABILITIES & EQUITY

16,334,092

SOURCES

General Donations	3,494,252
Directed Donations	1,851,136
Capital Donations	79,754

TOTAL FUNDS RECEIVED

5,425,142

USES

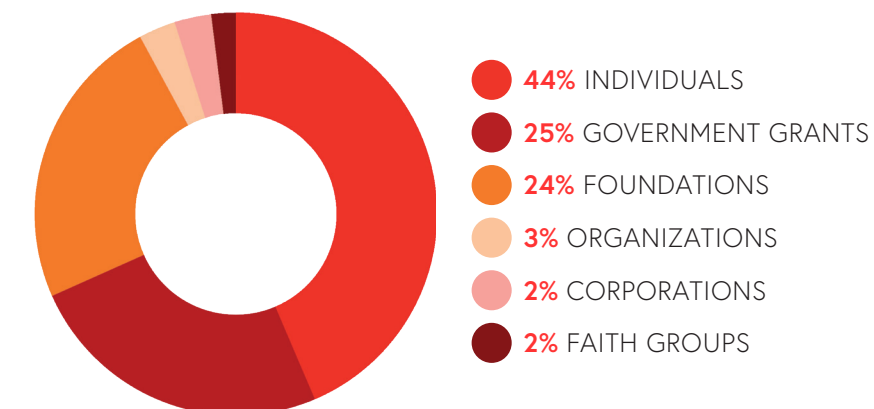
General Operating Expenses	1,526,636
Program Directed Spending	2,423,081

TOTAL FUNDS USED

3,949,717

INCREASE IN FUNDS ON DEPOSIT

1,475,425



#THEGRACEPLACEWAY

Follow us on social media, subscribe to our Goodness Report digital newsletter, or search #THEGRACEPLACEWAY to hear more testimonials from the Grace Place community!



For Children & Families

239.255.7200

📮 P.O. BOX 990531, NAPLES, FL 34116

📍 4300 21ST AVE SW, NAPLES, FL 34116

graceplacenaples.org

🐦 @GPNAPLES

📘 @GRACEPLACENAPLES

